



Can you help Ruth's confidence to grow?

www.shaw-trust.org.uk/basingstoke

sow a seed of change

Support Shaw Trust Basingstoke

Shaw Trust empowers 75,000 disabled and disadvantaged people a year to achieve their dreams.

At our project in Basingstoke, local disabled and disadvantaged people come together to take part in horticulture activities and learn valuable life skills such as managing money or making a healthy meal. This helps to grow confidence and work towards achieving their goals of getting a job and living life to the full.

Our teams also take great pride in nurturing public places in the local community, keeping them looking beautiful for everyone to enjoy.

How can you sow a seed of change?

We need to raise £10,000 to buy vital tools and equipment so our project users can continue to learn new skills which will help them find work.

There are lots of ways you can support us, from making a donation to organising a collection, taking part in a fundraising event or volunteering at the project.

Come and see us at one of our regular open days where you can buy plants that are lovingly grown by the project users.

Please return the attached form so that we can keep in touch with you about what we're up to.

Whatever you do will make a massive difference and really sow a seed of change in people's lives!



“It feels brilliant to have paid work. I’d like to work for myself eventually”

Richard, Basingstoke

Richard has a form of autism which affects his learning and social skills. He is hopeful that he will be able to get a job once his placement with Shaw Trust has finished.

His ambition is to set up his own gardening business.

HOW YOUR GIFT COULD HELP

£200.....

Would provide a work bench for our polytunnel to help people to grow plants.

£50.....

Helps support a disabled or disadvantaged person through a City and Guilds qualification, helping to achieve their dreams of a paid job in the future.

£20.....

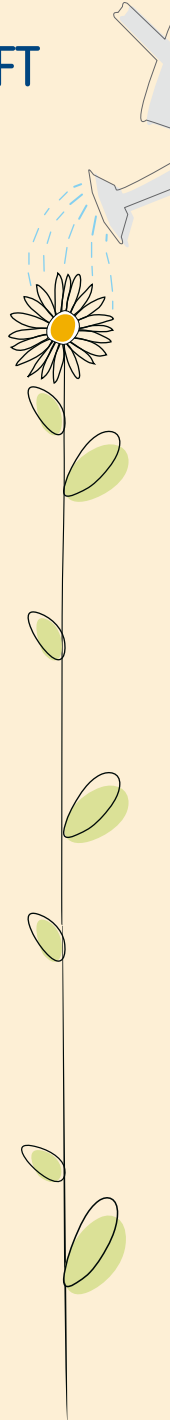
Buys new gardening tools to be able to teach project users horticulture skills.

£10.....

Supplies materials for our photography group enabling people to express themselves creatively.

£2.....

Pays for seeds for project users to grow plants as well as self confidence.





**“I like coming here
and growing plants.
It feels good to have
things to do”**

Ruth

Freepost RLSS-SZKH-EBRU
James Byron
SHAW TRUST
Fox Talbot House
Greenways Business Park
Chippenham, Wiltshire
SN15 1BN





All photos taken by the project's 'Zoomers' photography group

Sow a seed of change today and make a lasting difference to the lives of disabled and disadvantaged people in your community. They're willing to dig deep to change their lives but we need your help to supply the tools.

www.shaw-trust.org.uk/basingstoke

Thank you

For more information about supporting Shaw Trust contact:
James Byron, Tel: 01225 716358, Email: james.byron@shaw-trust.org.uk

Shaw Trust, Fox Talbot House, Greenways Business Park,
Bellinger Close, Chippenham, Wiltshire, SN15 1BN



Registered Charity No. 287785